

CERTIFICATE OF LOCATION OF GOVERNMENT CORNER

NORTH QUARTER Corner of Section 4, Township 107, Range 39, 5TH P.M.

STATE OF MINNESOTA, County of MURRAY

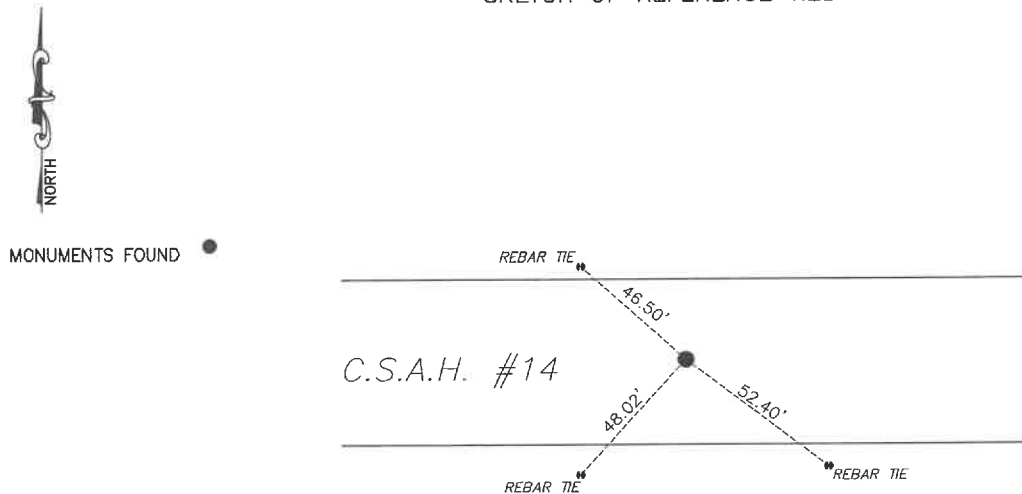
At the corner location shown on the sketch:

☐ On 6/4/2024 found a rail road spike set over stone per corner certificate.
DATE

☒ left monument as found, ☐ lowered monument, ☐ removed monument (explain)

☐ On _____ placed a _____
DATE

SKETCH OF REFERENCE TIES



Murray County
Coordinate System NAD83 (1996)

N: 195143.383
E: 561408.205

WGS84
LAT: 44°06'31.6564"
LON: -95°31'58.4100"

Statement of evidence relative to this corner location is on back of page.

I hereby certify that this document and the data contained herein was prepared by me or under my direct supervision.

Daniel L. Bueltel
Daniel L. Bueltel
License No. 43844

3/12/2025
DATE

MAR 13 2025

Karen Brown
MURRAY COUNTY RECORDER

Statement of Evidence

NORTH QUARTER CORNER SECTION 4, T107N, R39W of the 5th P.M.

In July of 1861 J.W. Myers surveyed the original township lines.

In September of 1861 L. Brockmann subdivided the township.

A survey from 1940 shows a concrete monument at the corner.

An undated survey record for Section 33-108-39 notes a witness corner 3 chains east and shows a distance of 2646.0 feet to both the southwest and the southeast corners of Section 33

In December 2020 Westwood Professional Services excavated with a backhoe and found a concrete monument down approximately 1 ft and set a railroad spike just under the road grade.

On June 4, 2024 Bueltel-Moseng Land Surveying found a railroad spike at the corner.